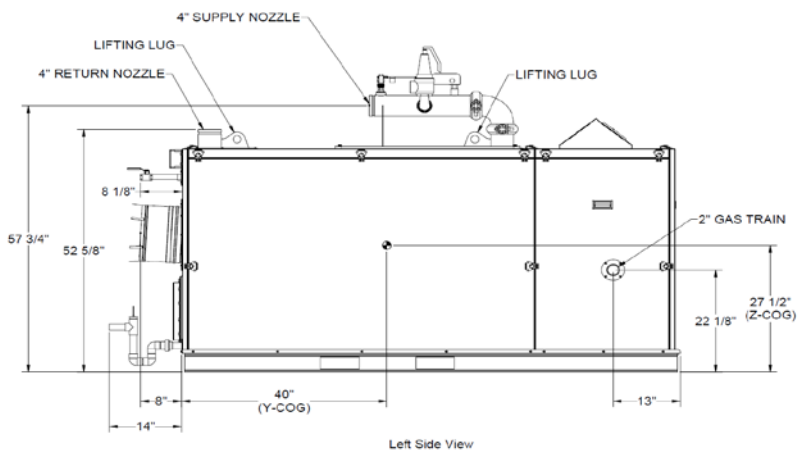
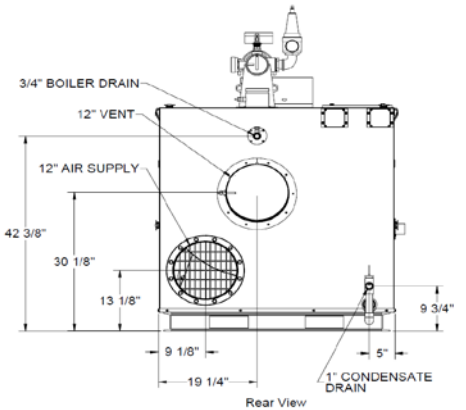
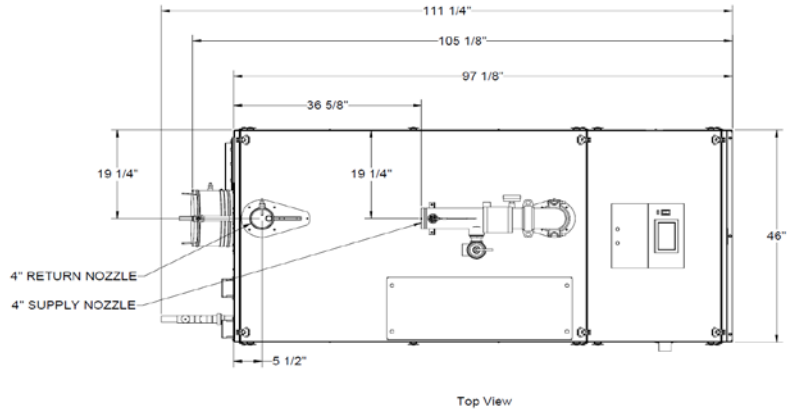
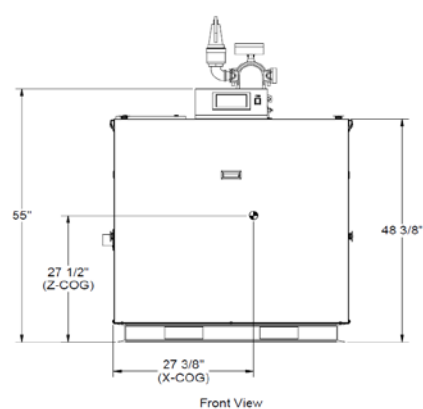


# AMP CONDENSING BOILERS - SUBMITTAL DATA SHEET

RATINGS AND CAPACITIES		
Input - Low Fire .....	<b>800,000</b>	BTU/HR
Input - High Fire .....	<b>4,000,000</b>	BTU/HR
Output - High Fire .....	<b>3,880,000</b>	BTU/HR
Boiler Horsepower .....	<b>115.9</b>	BHP
Thermal Efficiency .....	<b>97.0%</b>	
Low Fire Thermal Efficiency .....	<b>Up to 99%</b>	
Fuel .....	<b>Natural Gas</b>	
Firing Rate .....	<b>Full Modulation</b>	
Burner Turndown .....	<b>5:1</b>	
Low NOx Emissions .....	<b>&lt; 10 ppm</b>	
Inlet Gas Pressure (NG) .....	<b>4" wc</b>	Min.
	<b>14" wc</b>	Max.
Shipping Weight, Approximate .....	<b>2,581</b>	lbs

DIMENSIONS / CONNECTIONS	
- Height .....	<b>55"</b>
- Width .....	<b>44"</b>
- Length .....	<b>92"</b>
- Supply Connection .....	<b>4" Grooved</b>
- Return Connection .....	<b>4" Grooved</b>
- Vent / Air Intake Connections .....	<b>12"</b>
- Gas Connection .....	<b>2" NPT</b>

STANDARD EQUIPMENT	
- ASME Stainless Steel Heat Exchanger	
- Stainless Steel Pre-Mix Burner	
- Variable Speed Combustion Blower	
- Concert Boiler Control™ (24v)	
> 7" Color Touch Screen	
> Peer-To-Peer Boiler Communications (Up to 8 Units)	
> Energy Management System (EMS) Interface	
> USB Data Port Transfer	
> Self-Guiding Diagnostics	
> Unmatched Archives	
- High Limit Temperature Control, Manual Reset	
- Water Flow Switch	
- Low Water Cutoff, Manual Reset	
- Condensate Trap	
- Blocked Condensate Switch	
- Combustion Air Switch	
- Pressure Relief Valve	
- Pressure / Temperature Gauge	
- Supply & Return Temperature Sensors	
- Flue Gas Temperature Sensor	
- Modulating Gas Valve	
- Direct Spark Ignition and UV Scanner	
- High/Low Gas Pressure Switches, Manual Reset	
- 208v or 230v or 460v/3ph/60hz Line Voltage	
- Category IV Individual Venting	
- Category II Common Venting with Engineered Vent System	
- CPVC, Polypropylene & Stainless Steel Acceptable *Material	
- Sealed or Room Combustion Air Intake	



NOTES: 1. Dimensions shown are for reference only

FLOWS AND PRESSURE DROPS		
Delta T	Flow (GPM)	Δ P (Ft. Hd)
20°F Δ T (Max)	<b>388</b>	<b>19.9</b>
25°F Δ T	<b>310</b>	<b>12.9</b>
30°F Δ T	<b>259</b>	<b>9.7</b>
35°F Δ T	<b>222</b>	<b>7.9</b>
40°F Δ T	<b>194</b>	<b>6.5</b>
45°F Δ T	<b>172</b>	<b>5.5</b>
50°F Δ T	<b>155</b>	<b>4.4</b>
55°F Δ T (Min)	<b>141</b>	<b>4.2</b>

## AMP-4000

PROPERTY OF  
**THERMAL SOLUTIONS**  
Innovative Equipment for Hot Water Systems

PO BOX 3244 | LANCASTER, PA 17601

INNOVATIVE EQUIPMENT FOR  
HOT WATER SYSTEMS

WWW.THERMALSOLUTIONS.COM

\* Flue system material shall be capable of continuous operation at 210°F or higher and shall be certified to UL 1738 – venting system for gas-burning appliances cat II, III and IV.